

Case study: CBN Group

Multi-client CBN Group facility in Argentina features the pallet rack system

Location: Argentina



Mecalux has equipped the new CBN Group distribution centre in Buenos Aires (Argentina) with a pallet racking system that accommodates 41,659 pallets. The warehouse contains an efficient picking method to supply its customers faster.

About the CBN Group

The CBN Group is an Argentinian enterprise that runs high-productivity logistics centres where it provides 3PL storage for the most demanding multinationals in many different sectors, such as the automotive, pharmaceutical or consumer goods industries.

The company built a new logistics centre located in Tortuguitas, in the province of Buenos Aires, which called for a storage system suited to its customers' broad range of products.



Pallet racking

Following an analysis of the stored products types, the operations and the new warehouse's size, Mecalux furnished the installation with the pallet racking system.

Its adaptability facilitates product storage with a sizeable array of SKUs. Moreover, easy access to the pallets translates into top speeds when managing the flow of goods and order prep, as well as precise stock control.

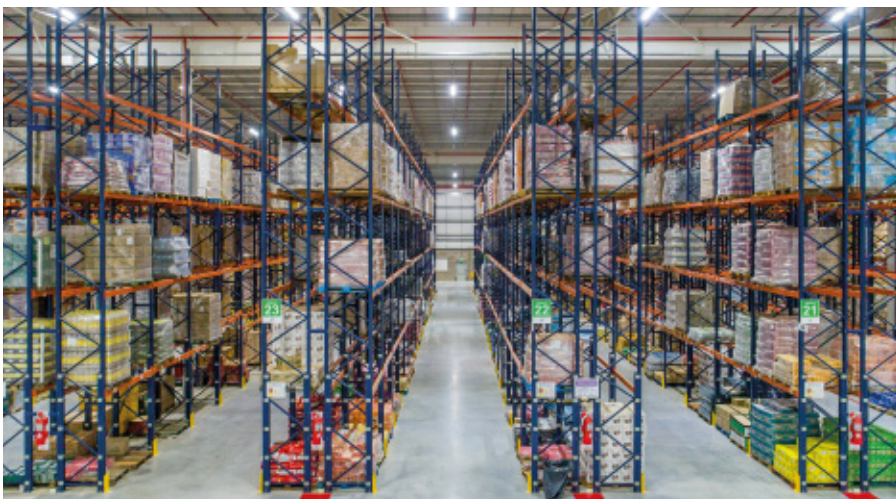
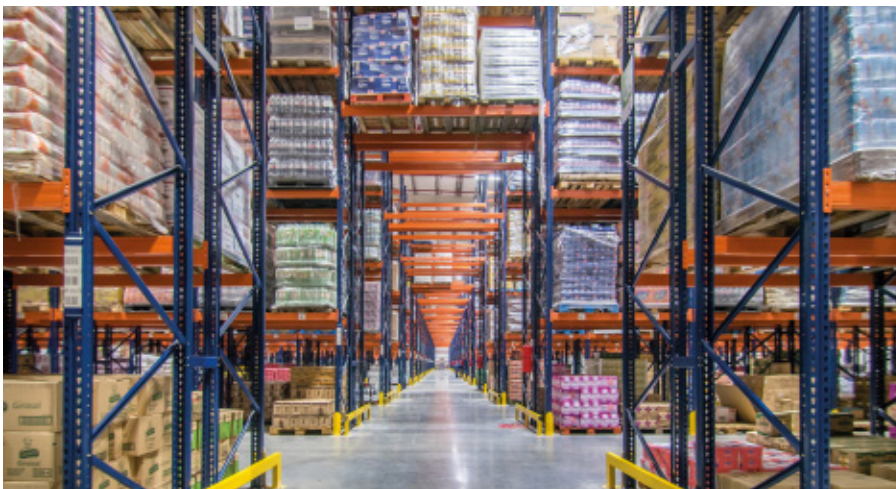
A warehouse sector has 9.5 m high racks with five different levels, and in sectors where the warehouse is the highest, the racks are 10.5 m high with six storage levels.

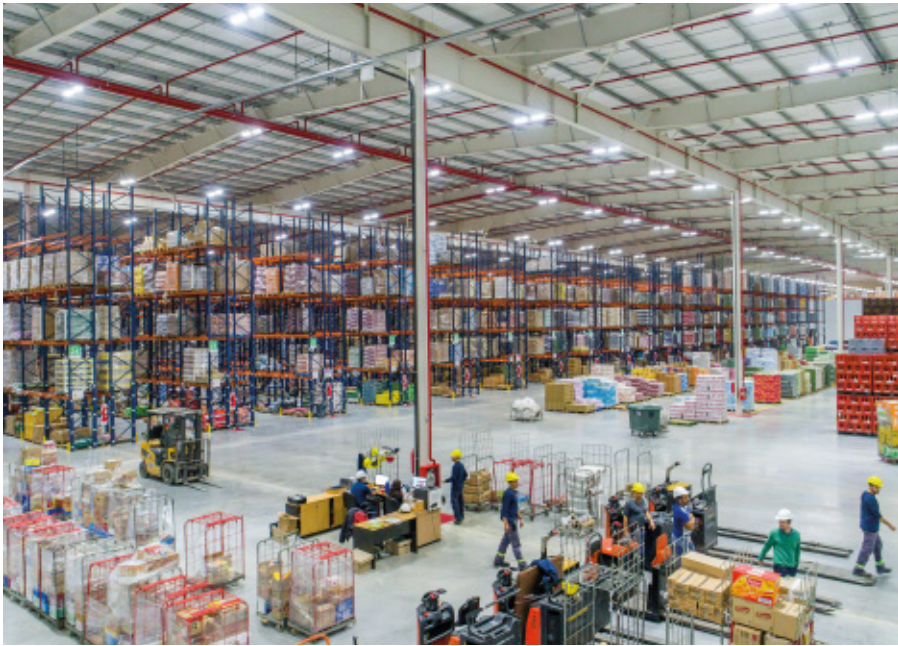
Picking takes place on lower levels and reserve pallets are deposited on the upper levels, which means product is always available.

Reach trucks are used to deposit pallets in the designated locations, as well as to replenish the lower storage levels with palletised goods.

An underpass cuts crosswise through the blocks, facilitating operator workflows, in addition to acting as the emergency exit.

Pallet racks in this centre house 41,659 pallets filled with a plethora of SKUs belonging to the different CBN Group customers





Order preparation

Operators work via zones and are assigned to a few working aisles. Orders are assembled in waves, in other words, they prepare several at the same time, in the same trip.

A-type products are placed directly on the ground floor, at one end of the racks.

Meanwhile, picking of B and C products is done directly off pallets on the lower levels

of the racks. Sorting goods according to their demand streamlines order prep.

Operators run ground-level order pickers, able to transfer up to four carts –each corresponding to an order– filled with products deposited therein.

Completed orders are sent to the consolidation area for their contents to be verified and the issuing of the require dispatch documentation.

Reception and dispatch area

The warehouse possesses a spacious reception and dispatch area. The two operations are kept separate to avoid mix ups. Inflowing pallets are received from outside sources, waiting to be slotted into their assigned locations. A preloads zone is also set up on the floor where consolidated merchandise accumulates and carts with finished orders are gathered into groups. Subsequent deliveries are thus speedily loaded into lorries.





Advantages for the CBN Group

- **Large capacity:** these pallet racks have a storage capacity of more than 41,500 pallets.
- **Excellent goods management:** direct access to products benefits storage and picking work.
- **Skilled picking:** the rack layout and the use of certain equipment make order picking quick and easy.



Technical data

Storage capacity	41,659 pallets
Pallet size	1,000 x 1,200 mm
Max. pallet weight	1,000 kg
Racking height	9.5 m and 10.5 m
Racking length	100 m

