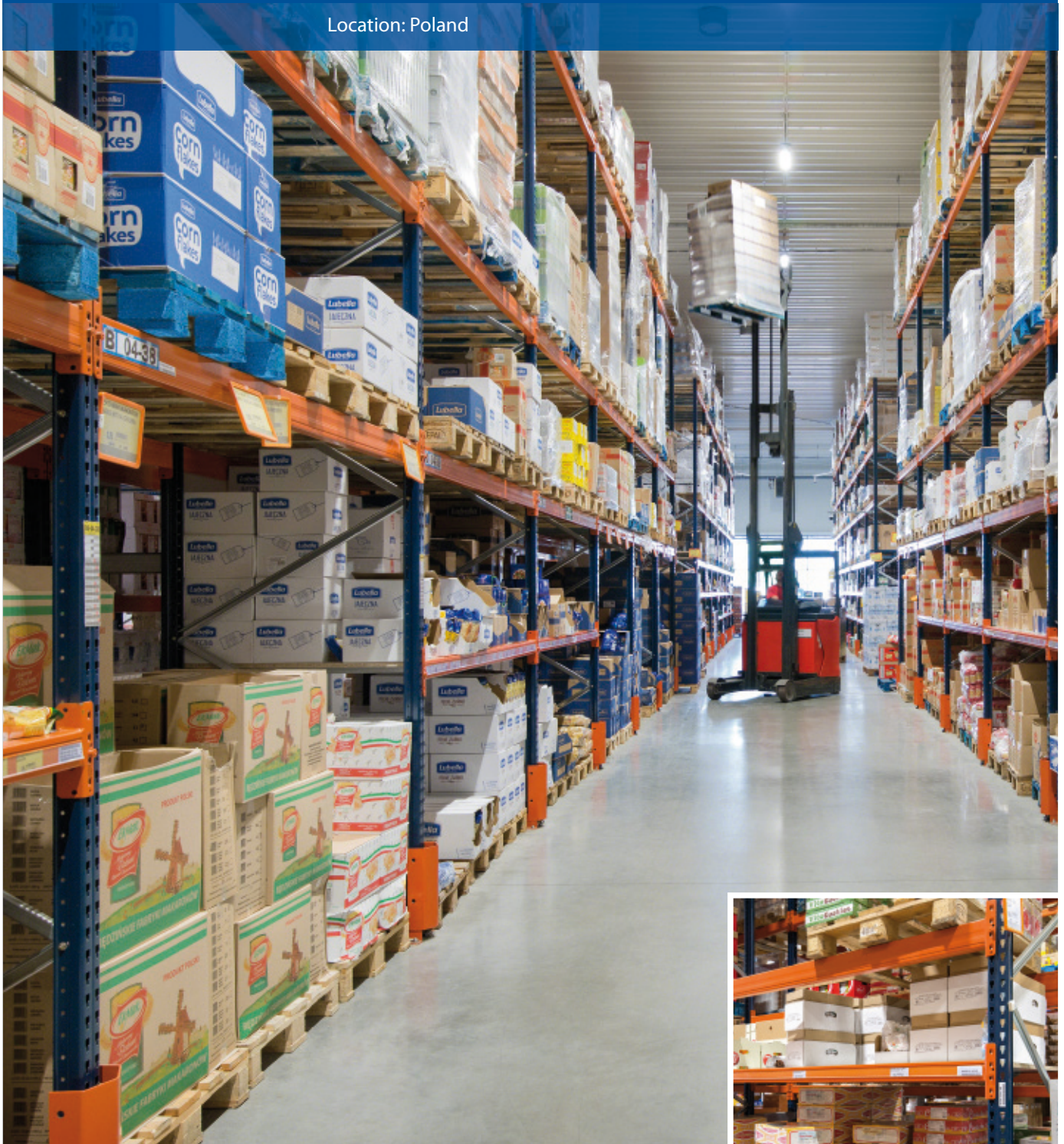


## Case study: Jot-Ł

Food and beverage wholesaler gets Mecalux racks

Location: Poland



Jot-Ł, a well-known Polish wholesaler, has equipped its new warehouse in Wrocław with pallet racks from Mecalux to hold 4,007 pallets. The flexibility of these racks in terms of freedom to configure modules and direct access to the goods have significantly optimised the way the warehouse functions.

### About Jot-Ł

Jot-Ł is a Polish wholesale food chain that runs cash & carry outlets. This family business was founded in 1995 and has been in a constant state of development since then. Today, it has eleven branches throughout Poland offering food, alcohol and household chemical products at competitive prices. Jot-Ł's product catalogue includes items from leading national brands, as well as traditional local goods.

### Cooperation between Mecalux and Jot-Ł

Jot-Ł is gradually opening new branches as part of its ongoing business development. Since 2011, Mecalux has been the company's storage solutions provider. In each of the warehouses, it has set up pallet racks with a capacity for approximately 1,500 pallets and places to pick items at the lower levels.

The cooperation and harmony that exists between the two companies has led to the recent equipping of the new Jot-Ł warehouse located at its headquarters in Wrocław. The new warehouse can hold more than 4,000 pallets and has become the company's largest to date.



### Wholesaling with pallet racks

A total of 18 pallet rack aisles, 19.5 m long and 5.5 m high, have been arranged down the centre of the warehouse and six separate racks have been installed along the building's walls. Each of the racks can hold 800 x 1,200 mm pallets and a maximum unit weight of up to 1,000 kg.

Versatility is one of the biggest advantages of this system, because it allows the racks to be shaped to suit the type of stored load, its weight and dimensions.

Due to the wide variety of products handled in the Jot-Ł warehouse, up to 17 different pallet rack configurations have been arranged.

Metal shelves have been enabled on the lower levels of most racks to facilitate cus-

tom shopping and provide direct access to products. The palletised reserve stock is stored at the highest levels, aided by reach trucks.

The warehouse also has a refrigerated area where dairy products can be stored in three blocks of pallet racks. Items are placed separately on shelves or in bulk packages and, as in the room temperature zone, reserve pallets are housed on the upper levels.

To increase the safety of customers, operators and loads throughout the warehouse, the uprights of all the racks have been protected to absorb the impacts produced by the handling equipment during the unit load handling operations.





### Advantages for Jot-Ł

- **Large capacity:** the food wholesaler manages 4,007 pallets in its Wrocław warehouse.
- **Versatility:** pallet racks allow the shelf levels to be placed at different heights, facilitating the storage various sized products.
- **Accessibility to products:** direct access to items streamlines purchases made by customers and storage and replenishment by the operators.



### Technical data

Storage capacity	4,007 pallets
Pallet size	800 x 1,200 mm
Max. pallet weight	1,000 kg
Racking height	5.5 m

